

MONTHLY MEMBERSHIP PROGRESS REPORT

District 24 C

Results as of: 11/30/2023

GMT:

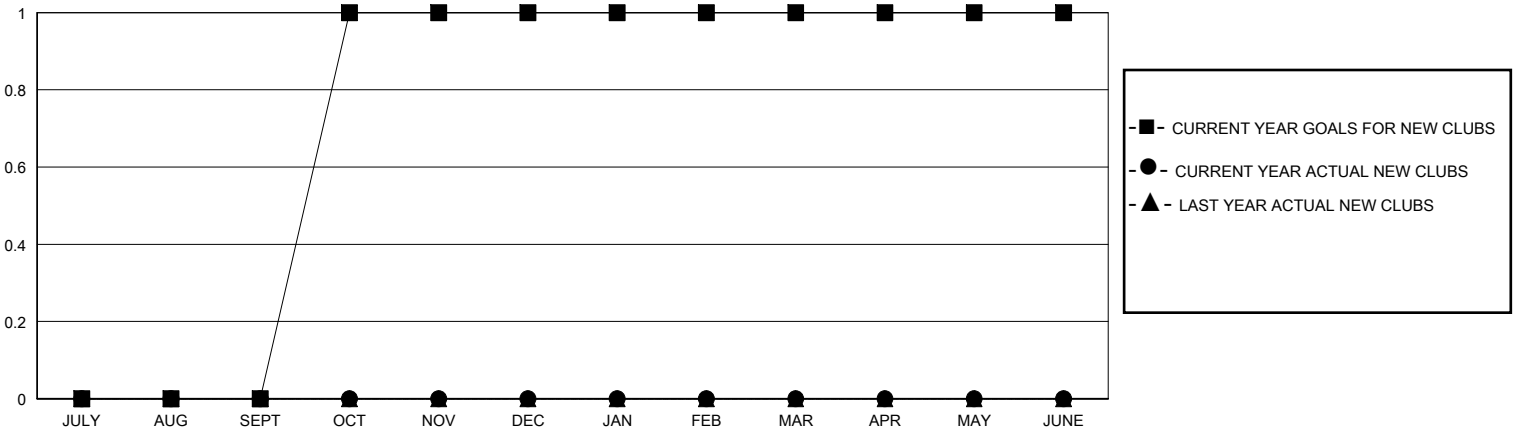
LOCATION VIRGINIA

GMT CA

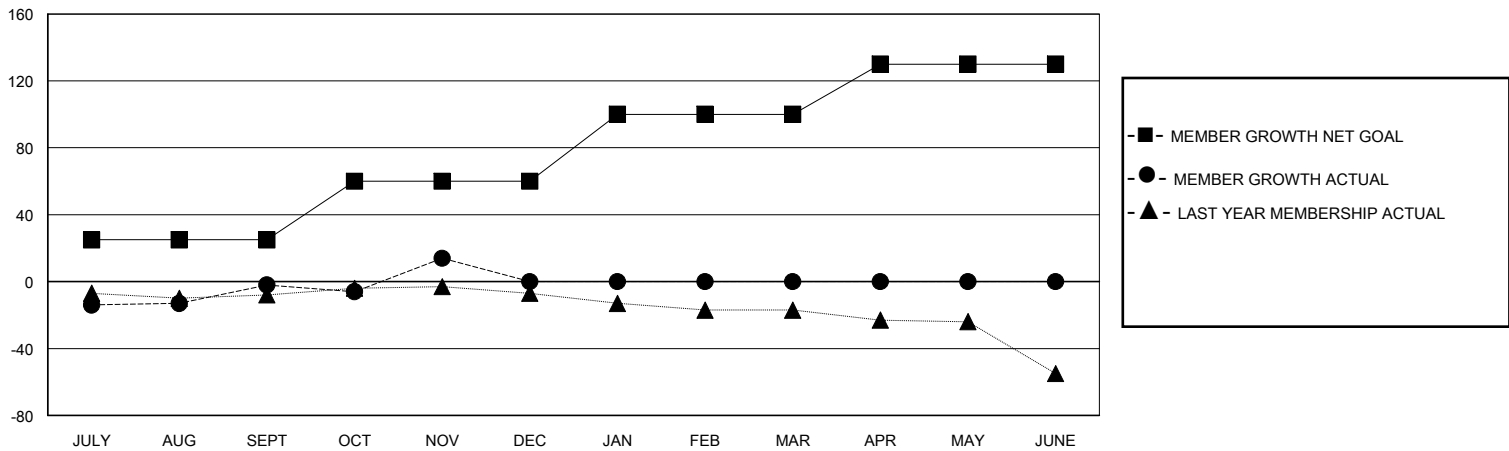
Clubs			
RESULTS FOR 2023-2024			
QUARTER	NEW CLUB GOAL	NEW CLUBS	DROPPED CLUBS
JULY/AUG/SEPT	0	0	0
OCT/NOV/DEC	1	0	0
JAN/FEB/MAR	0	0	0
APR/MAY/JUNE	0	0	0

Members			
RESULTS FOR 2023-2024			
QUARTER	MEMBER GROWTH NET GOAL	MEMBER GROWTH ACTUAL	DROPPED MEMBERS ACTUAL (including transfers)
JULY/AUG/SEPT	25	36	34
OCT/NOV/DEC	35	45	26
JAN/FEB/MAR	40	0	0
APR/MAY/JUNE	30	0	0

GOALS AND ACTUAL NEW CLUBS CUMULATIVE



GOALS AND ACTUAL MEMBERS CUMULATIVE



DROPPED CLUBS: 0	25 CLUBS OF 51 ADDED 1 OR MORE NEW MEMBERS	GENDER DISTRIBUTION MALE 803 (63.83%) FEMALE 455 (36.17%)
DROPPED MEMBERS DECEASED 13 CLUB CANCELLED 0 OTHER 47 TOTAL 60	CLICK HERE FOR CUMULATIVE MEMBERSHIP DATA	TOTAL FAMILY UNIT MEMBERS 224 FAMILY MEMBERS PAYING HALF DUES 113